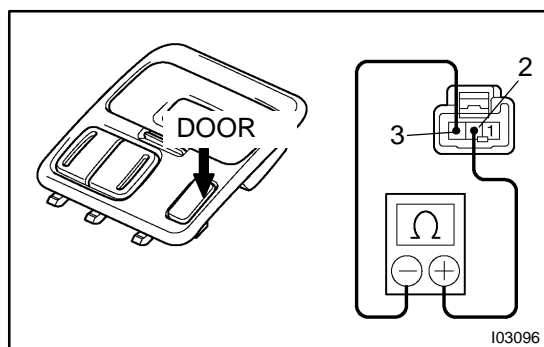


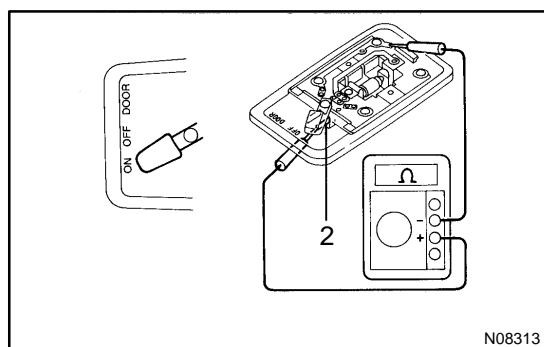
INSPECTION

1. INSPECT FRONT PERSONAL LIGHT CONTINUITY

- Disconnect the connector from the personal light.
- Push the personal light switch ON, check that continuity exists between terminals 3 and 1.

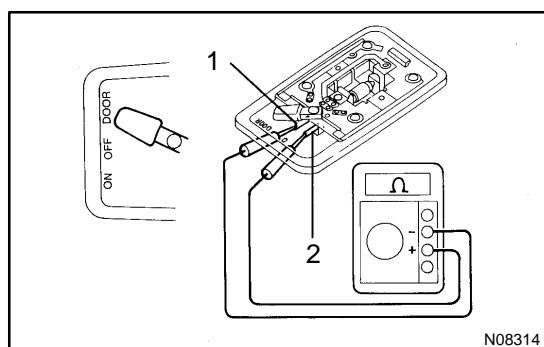


- Turn the light switch to the DOOR position, check that continuity exists between terminals 2 and 3.
- If the result is not as specified, replace the bulb or light.

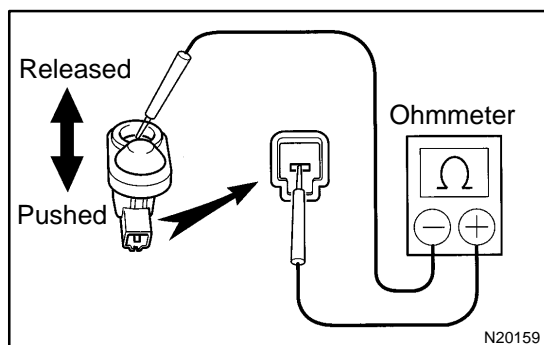


2. INSPECT ROOM LIGHT CONTINUITY

- Disconnect the connector from the light.
- Turn the interior light switch ON, check that continuity exists between terminal 2 and body ground.



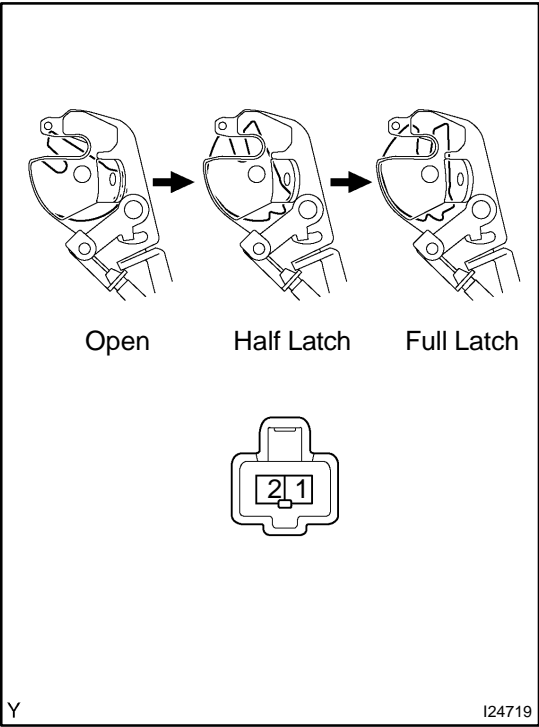
- Turn the light switch to the DOOR position, check that continuity exists between terminals 1 and 2.
- If the result is not as specified, replace the bulb or light.



3. INSPECT (FRONT) DOOR COURTESY SWITCH CONTINUITY

- Check that continuity exists between the terminal and the switch body with the switch ON (switch pin released: door opened).
- Check that no continuity exists between terminals and the switch body with the switch OFF (switch pin pushed in: door closed).

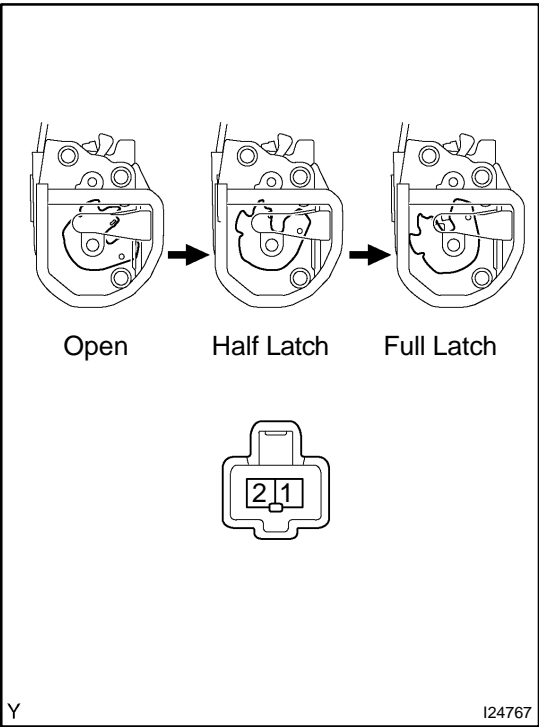
If the result is not as specified, replace the switch.



4. Access door:
INSPECT REAR UPPER DOOR COURTESY SWITCH
CONTINUITY

Switch Position	Tester Connection	Specified Condition
ON (Open)	1 – 2	Continuity
ON (Half latch)	1 – 2	Continuity
OFF (Full latch)	1 – 2	No continuity

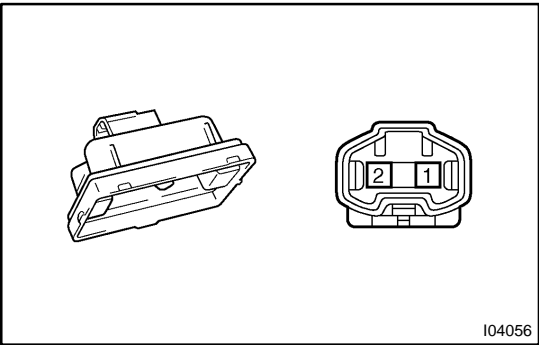
If the continuity is not as specified, replace the upper door lock.



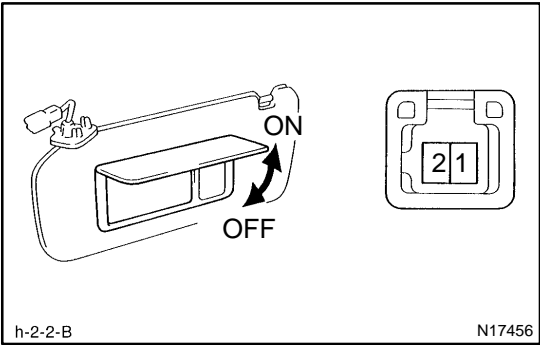
5. Access door:
INSPECT REAR LOWER DOOR COURTESY SWITCH
CONTINUITY

Switch Position	Tester Connection	Specified Condition
ON (Open)	1 – 2	Continuity
ON (Half latch)	1 – 2	Continuity
OFF (Full latch)	1 – 2	No continuity

If the continuity is not as specified, replace the lower door lock.



6. INSPECT DOOR COURTESY LIGHT CONTINUITY
Check that continuity exists between terminals 1 and 2.
If the continuity is not as specified, replace the bulb or light.



7. INSPECT VANITY LIGHT CONTINUITY

Switch Position	Tester Connection	Specified Condition
OFF (Closed)	1 – 2	No continuity
ON (Opened)	1 – 2	Continuity

If the continuity is not as specified, replace the bulb or vanity light.